

EMERIC

FIETH|HOMES

AVENUE

BEDS
4

BATH
2.5

GARAGE
2 Car

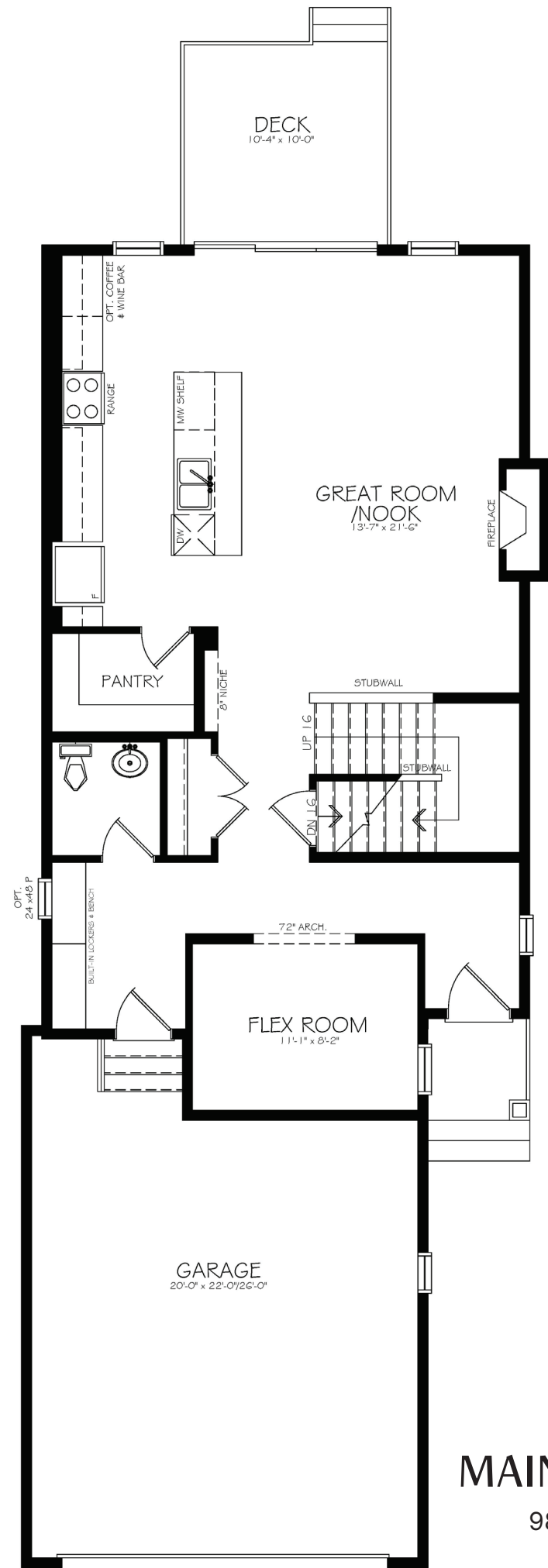
SIZE
2,274 sq ft



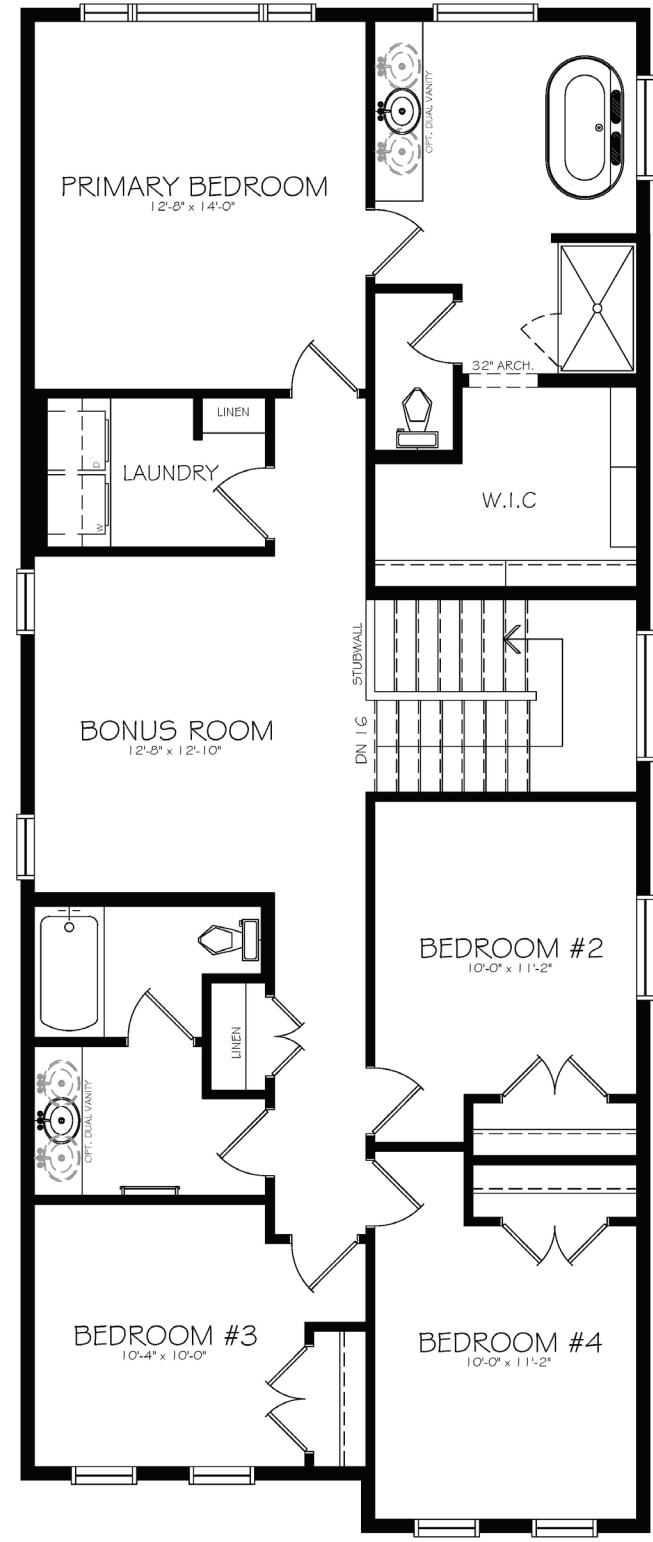
MODERN STYLE

EMERIC

EMERIC



MAIN LEVEL
985 sq ft



UPPER LEVEL
1,289 sq ft

BEDS
4

BATH
2.5

GARAGE
2 Car

SIZE
2,274 sq ft



Fifth Avenue Homes

620 – 10201 Southport Road SW
Calgary, AB T2W 4X9
403.984.6976



Fifth Avenue Properties

1000 - 1700 Dickson Ave
Kelowna, BC V1Y 0L5
250.764.3738

The builder reserves the right to modify or change plans, specifications, features and prices without notice. Materials may be substituted with equivalent or better at the builder's sole discretion. All dimensions and sizes are approximate and are based on architectural measurements. As reverse, mirrored and/or flipped plans occur throughout the building, please see architectural plans if material to your decision to purchase. Renderings, furnishings and equipment shown are an artist's conception and are intended as a general reference only. Please see disclosure statement for specific offering details. E. & O.E.

FIFTHAVEHOMES.COM